

ACCOMMODATION AND TRANSPORT

Official Tournament Accommodation

Holiday Inn Express Melbourne Little Collins

- **\$175.00 per room per night** – single or twin.
- Twin rooms are 2 x king single beds
- Rate Includes: Express Start Breakfast and Free high-speed Wi-Fi for unlimited devices
- Express breakfast includes: 3 hot Items (Eggs, Bacon, Hashbrowns/backed beans) as well as continental offerings (Yogurts, cereals, toast, fruits etc) .
- Wheelchair accessible rooms available – limited supply so book quickly. Accessible rooms have 1 x queen bed. Can request an adjoining room to a standard room.
- View their website [here](#)



Booking conditions

- All bookings and payments are sorted directly with the accommodation provider, via this exclusive booking link:

[BOOK HERE](#)

- All venues have a limited number of accessible units available. If there are none available at the time of booking, please contact events@badmintonoceania.org

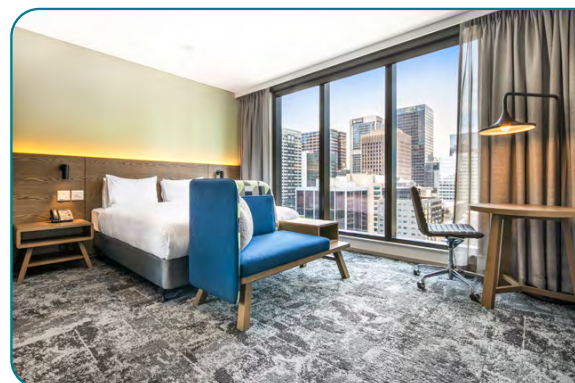


Arrival Airport

- Melbourne Tullamarine Airport (MEL) – Departure Dr, Melbourne Airport VIC 3045

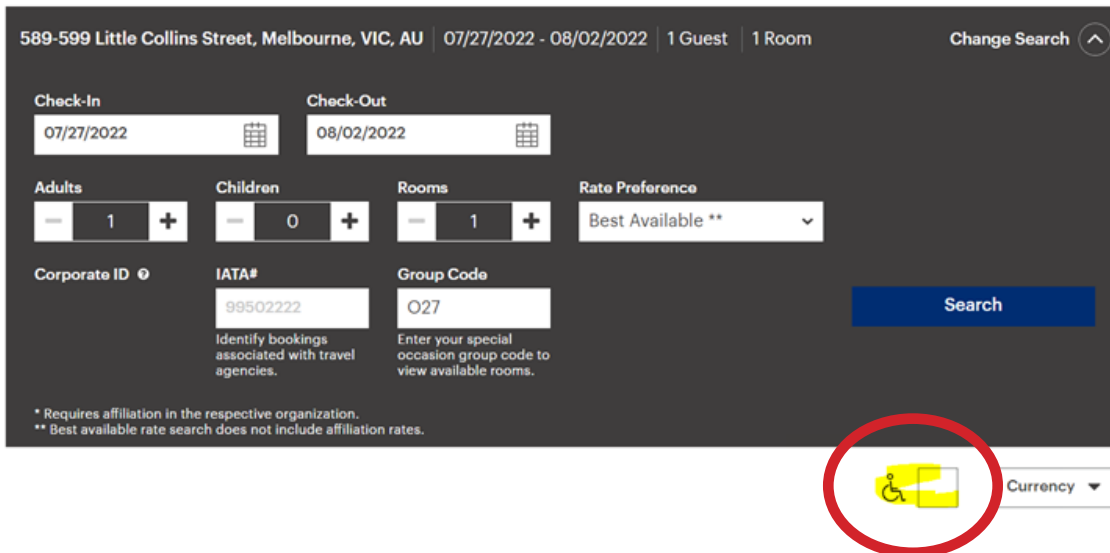
Transportation

- Transportation will only be provided to/from Tullamarine Airport and the Tournament accommodation providers.
- Airport pickups will begin on Wednesday 27 July 2022 and the last day for airport drop off will be on Monday 1 August 2022.
- The transportation form must be returned by Friday 8 July 2022 (requests after this date may not be accepted).
- Accessible transport will be provided for all Wheelchair players from the official accommodation to the competition venue. Standing players and accompanying personnel will be provided with a tram pass.
- Any questions about Transportation, please email events@badmintonoceania.org



BOOKING INFORMATION

- Click here to see the booking page – [BOOK HERE](#)
- If you require a wheelchair accessible room, check the square next to the wheelchair icon at the bottom right of the booking widget (see image below)



The image shows a dark-themed booking widget for a hotel. At the top, it displays the address "589-599 Little Collins Street, Melbourne, VIC, AU", the dates "07/27/2022 - 08/02/2022", "1 Guest", and "1 Room". There is a "Change Search" button with an upward arrow. Below this, there are fields for "Check-In" (07/27/2022) and "Check-Out" (08/02/2022), each with a calendar icon. The next row contains "Adults" (1), "Children" (0), "Rooms" (1), and "Rate Preference" (Best Available **). Below that are "Corporate ID", "IATA#" (99502222), and "Group Code" (O27). A blue "Search" button is on the right. At the bottom right, there is a red circle around a yellow wheelchair icon next to a "Currency" dropdown menu. Small text at the bottom left reads: "* Requires affiliation in the respective organization." and "** Best available rate search does not include affiliation rates."

- If you would like to request an adjoining room, please write this in the special request field when booking and they will try their best to confirm these as required
- The default screen automatically prefills the tabs to book six nights. Simply edit the dates to suit the dates you wish to check in and out
- Please note that while the booking link will suggest carparking rates are \$35/night, we have negotiated a deal for \$20/night however their website cannot be updated to reflect this. If you select/request carparking, you're invoice will automatically be updated to reflect the \$20 rate.
- A credit card is required at the time of booking
- Payment will be processed on arrival but should anyone cancel between 21 – 0 days prior to check in, a cancellation fee will apply